

For Sale **Lot 715 Franklin Way, Louth Park**

\$733,753

4

3

2

1533 m2

ASX3 Living type - Hillview Estate Lot 715 House & Land

The estate provides a unique opportunity for the astute buyer to live in a rural location which can accommodate large residences surrounded by plenty of space on an undulating 1500m2 lot.

The Baxter ASX3 is part of the Living home range and approximately 271 SQM. The home features 1 story(s), 4 bedrooms, 2 living space(s), 3 bathroom(s), 2 car space(s).

More information

Craig Baxter

0412 381 900

craig.baxter@baxterhomes.com.au



Please note that Baxter will assist you in considering which home to fit on a block as requirements vary by estate and council. Prices are subject to change and confirmation when tendering a home price to you. Guidance on inclusions and exclusions are on our website. Price guide includes \$395,000 that will be paid directly to the developer.



Integrity

Performance

Communication



Baxter Homes – Ph: (02) 4340 4037
 Head Office: 9/2 Joule Place, Tuggerah NSW 2259
 Web www.baxterprojecthomes.com.au
 Email sales@baxterhomes.com.au



4



3



2



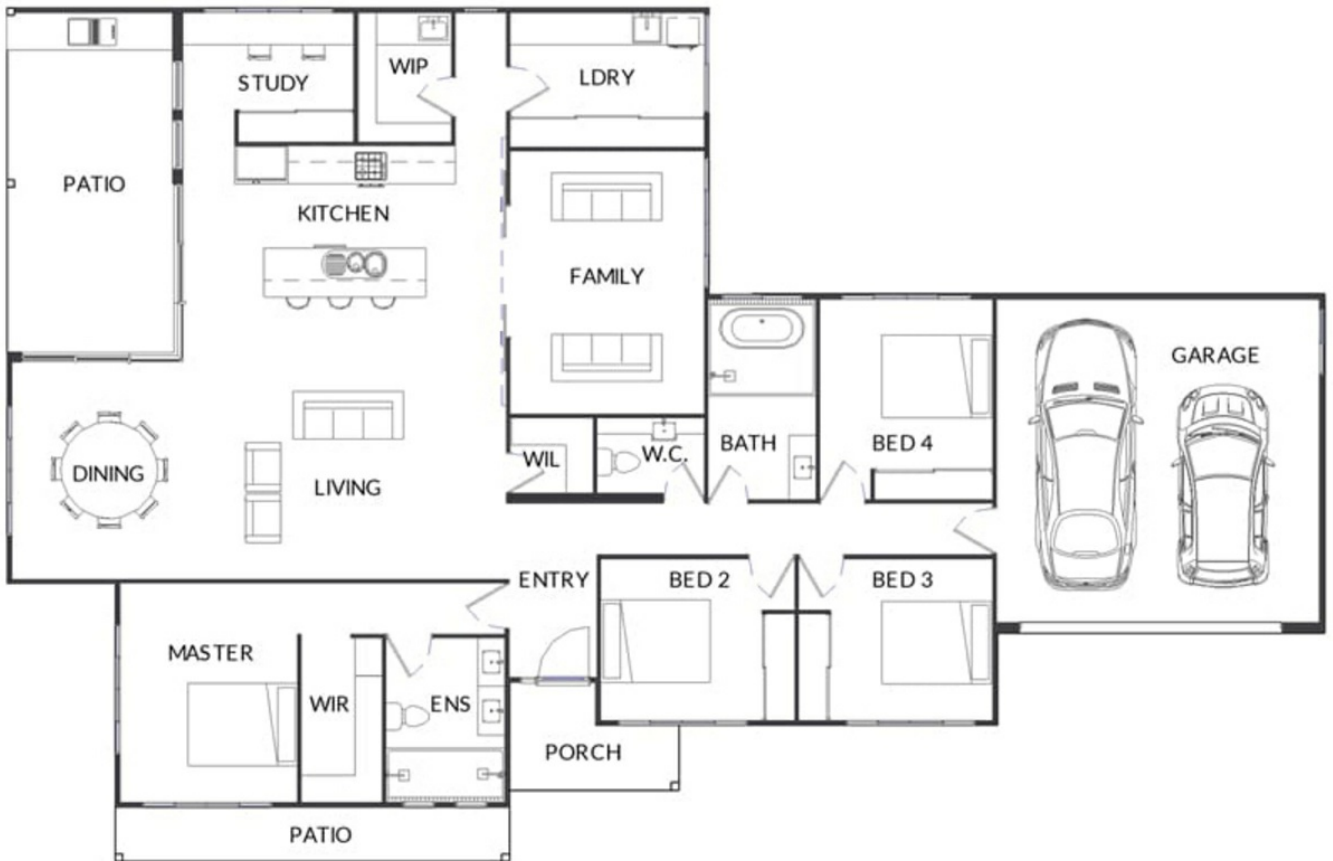
1533 m2

Category: House - Storeys: 1

Home Width (mtrs): 24.40 - Home Length (mtrs): 15.80

Features: Built In Robes, Butlers WIP, Study, Water Tank

Ideal For: Family



This brochure is not a formal tender quotation to you. Price guide is valid for 3 months from 03 Sep 2020 and inclusive of GST. Home inclusions and exclusions are detailed on our website and maybe different from those pictured. If the lot and home type suits, Baxter would meet with you to learn more about your requirements before providing you a separate formal quotation. The land contract will be issued separately by the developer and is subject to availability. Any prices or price guidance is subject to change without notice. Copyright © Baxter Building Co (AUST) Pty Ltd 2020.



Ph: (02) 4340 4037