



Image may depict upgrades that are not included in the pricing.

Floor area: 250.73m² / 26.99sq | Block size: 820m²
 Lot 506 Bordeaux Terrace, Lochinvar

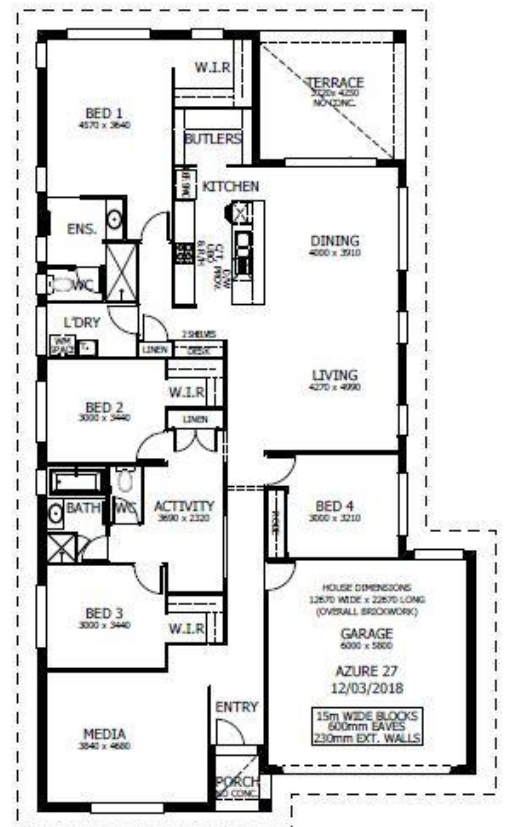


Azure 27 Package Inclusions

* The Azure 27 is on display at 22 Breakwell Road, Cameron Park

"ASK US ABOUT OUR CURRENT PROMOTIONS"

- * Hampton's facade
- * Covered Alfresco
- * Open Plan Living
- * Upgraded Designer Kitchen with Stainless Steel appliances
- * Westinghouse dual fuel freestanding cooker & canopy range hood
- * 'Reconstituted' stone benchtops to Kitchen
- * Fully Ducted Air Conditioning
- * Floor coverings throughout.
- * FLYSCREENS to all windows and sliding doors.
- * Wall mounted clothesline
- * Brick letterbox
- * TV antenna.
- * Concrete Allowance to Driveway, Porch & Terrace
- * Site Cost allowance including Council Approval (subject to Contour Survey)
- * Allowance included for late registration date



BEN HANCOCK

0435 956 546

ben.hancock@perryhomes.com.au

www.hunterregionhouseandland.com.au

BROOKE SINCLAIR

02 4077 3833

brooke.sinclair@perryhomes.com.au

www.hunterregionhouseandland.com.au

