



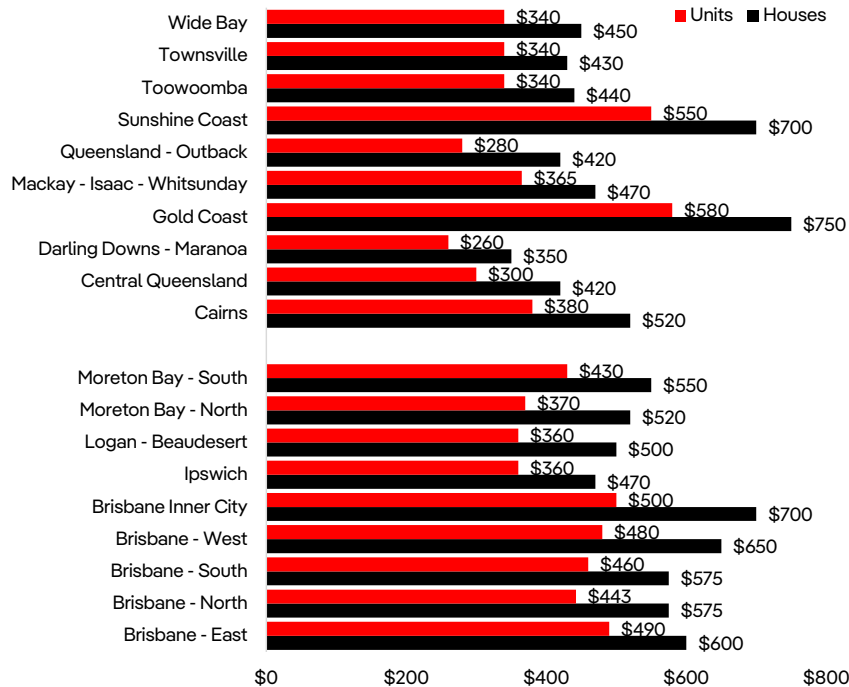
HIGHLIGHT YOUR BRAND THIS SUMMER

Overview of the market for properties for rent

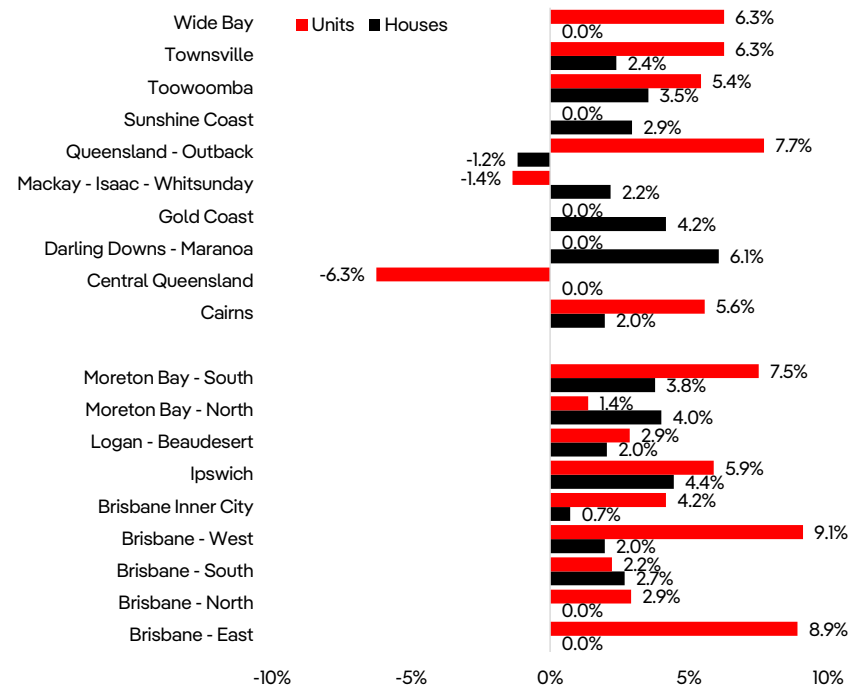


Brisbane median advertised rents were \$500/week in Jan 23 and in regional Qld they were also \$500/week

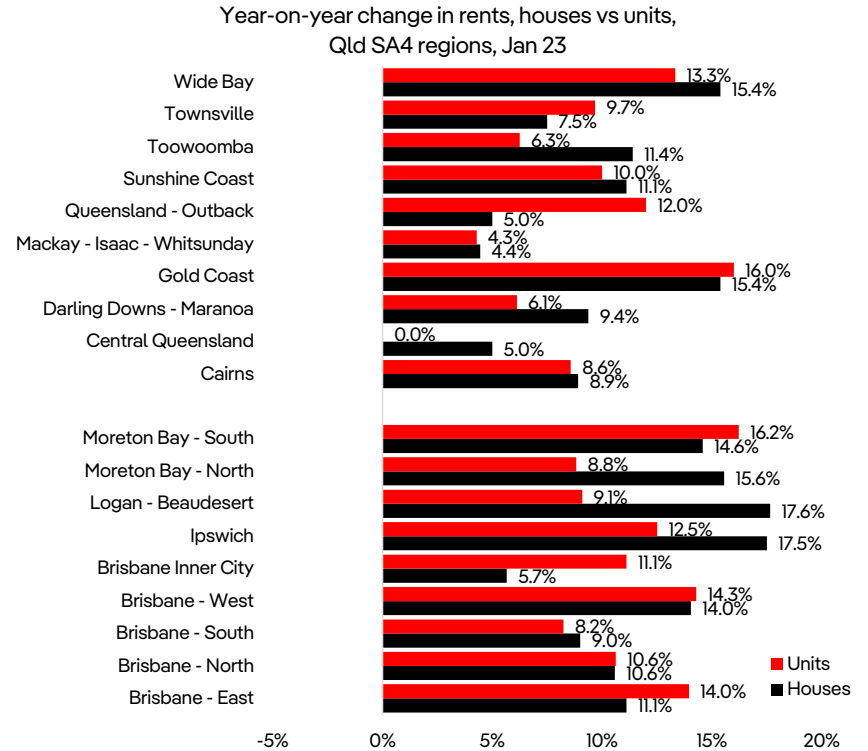
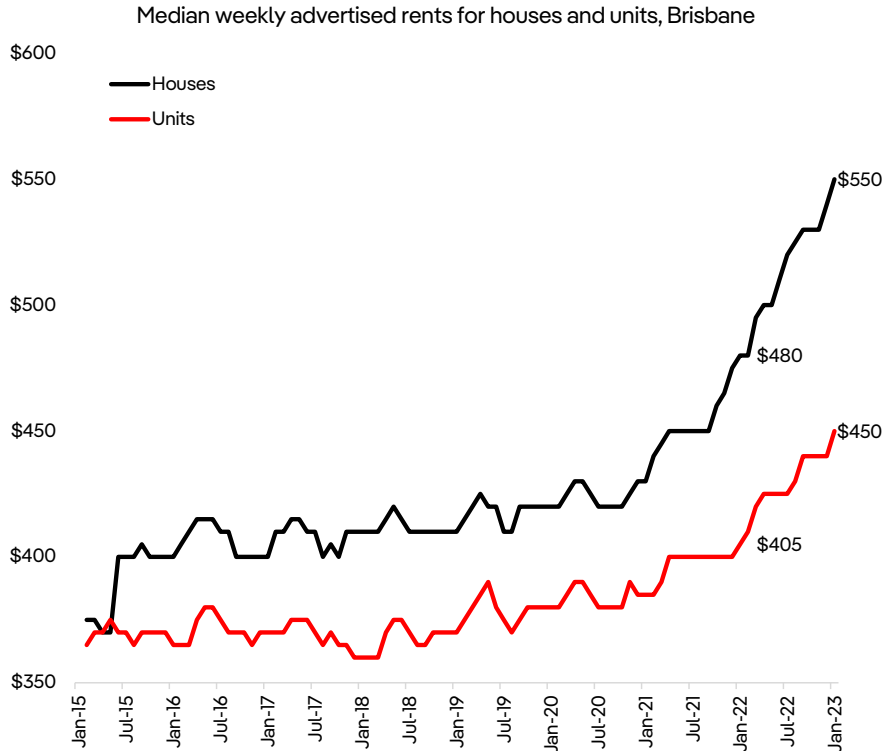
Median weekly advertised rents, houses vs units, Qld SA4 regions, Jan 23



Quarter-on-quarter change in advertised rents, houses vs units, Qld SA4 regions, Jan 23

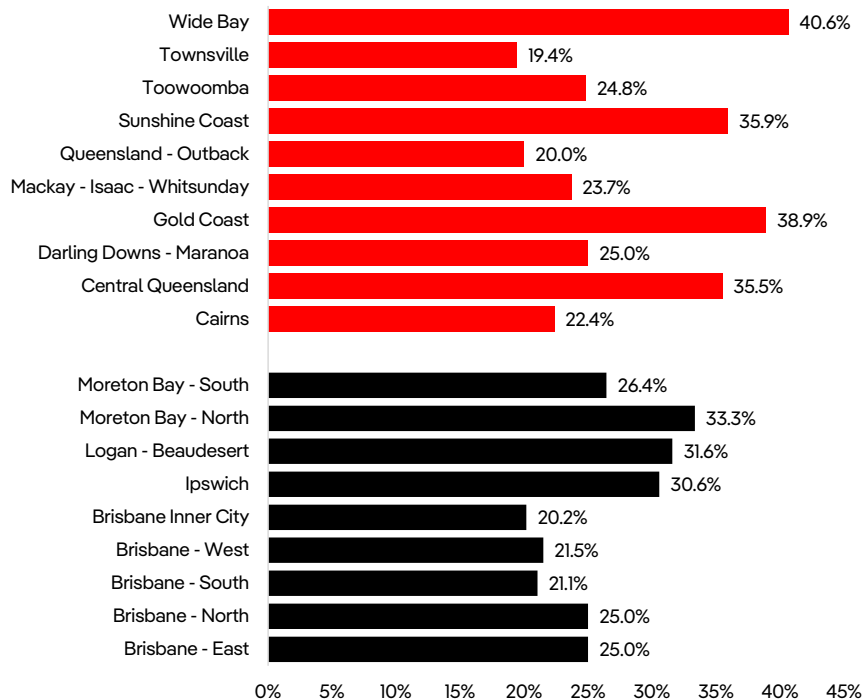


Brisbane median advertised rents were +12.4% yoy to Jan 23 and regional Qld rents were +11.1%

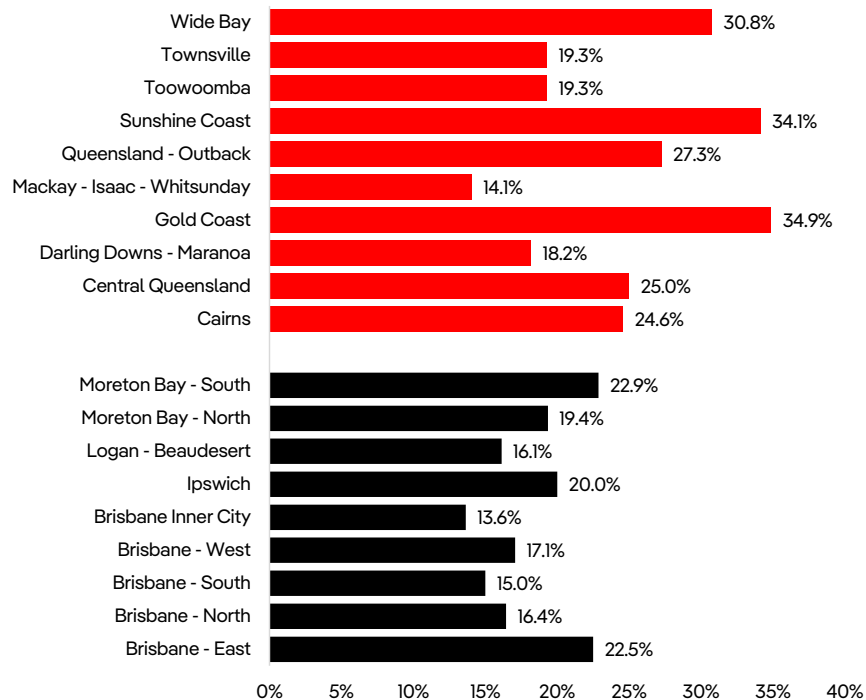


Since the start of the pandemic Brisbane rents are +23.5% and regional Qld rents are +28.2%

Change in house rents, Qld SA4 regions, Mar 20 to Jan 23

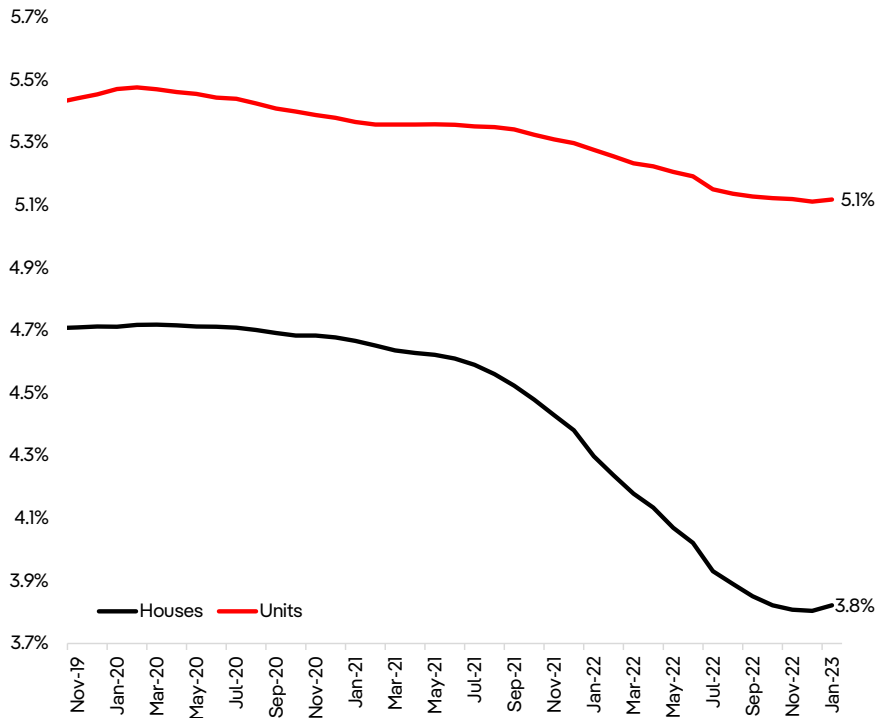


Change in unit rents, Qld SA4 regions, Mar 20 to Jan 23

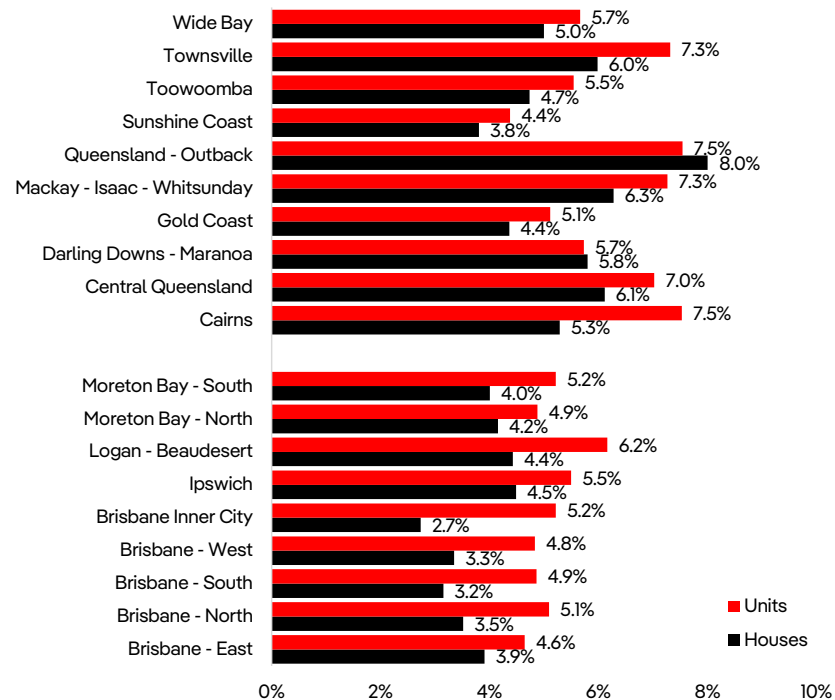


Gross rental yields in Brisbane in Jan 23 were 4.4% and in regional Qld they were 5.2%

Gross rental yields houses vs units, Brisbane

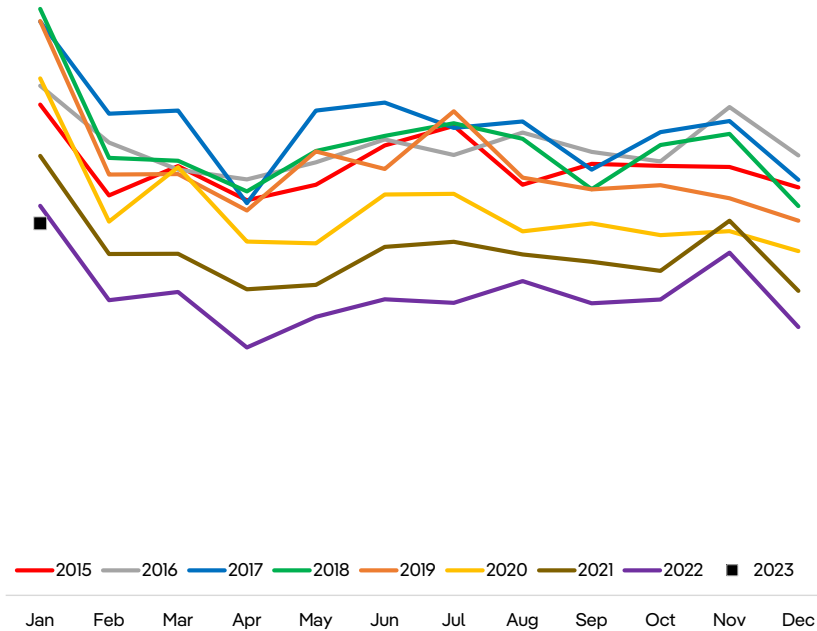


Gross rental yields, Qld SA4 regions, houses vs units, Jan 23

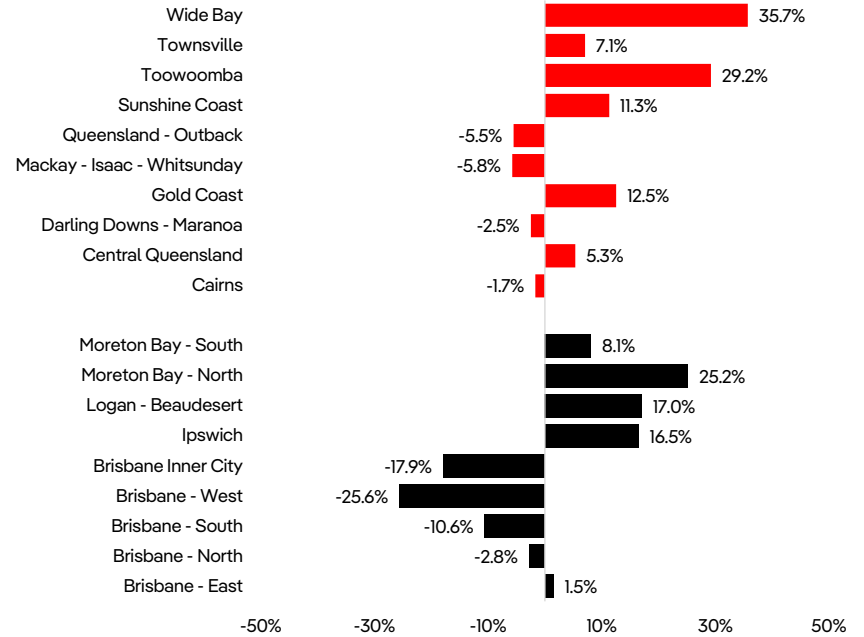


New rental listings in Brisbane were -4.5% yoy in Jan 23 and in regional Qld they were +9.9%

Monthly new rental listings Brisbane, 2015 to 2023

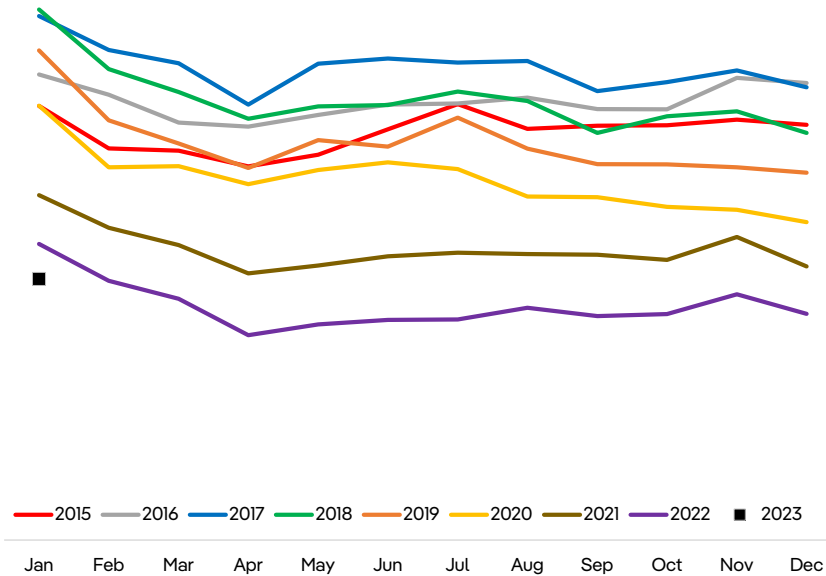


Year-on-year change in new rental listings, Qld SA4 regions, Jan 23

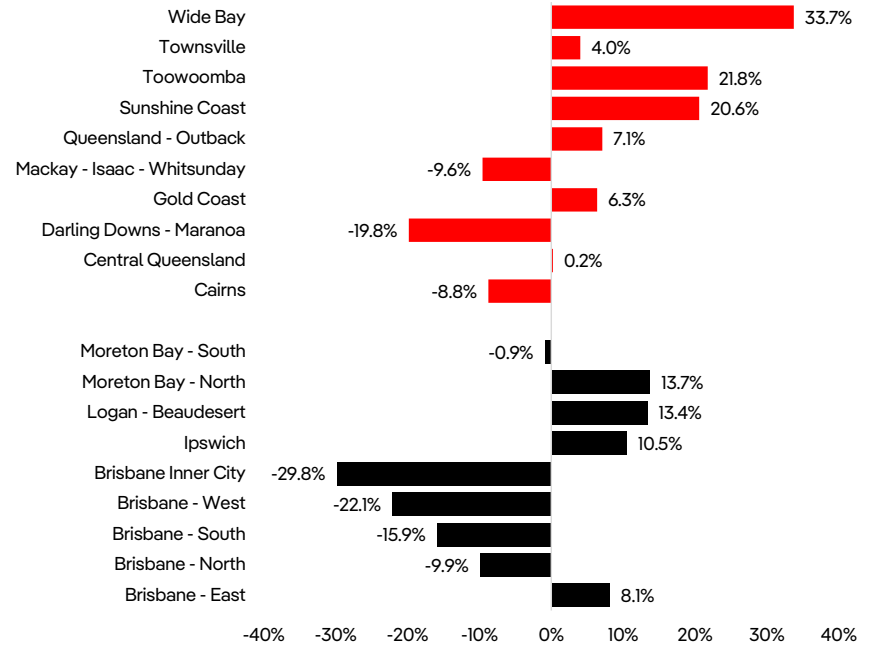


Total rental listings were -11.8% yoy in Jan 23 in Brisbane and +6.4% yoy in regional Qld

Monthly total rental listings Brisbane, 2015 to 2023

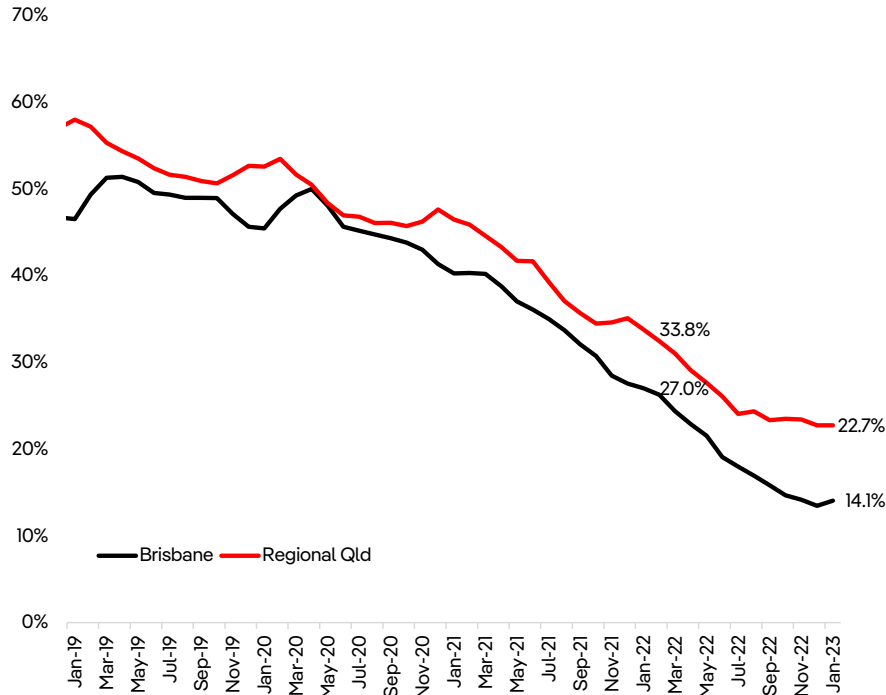


Year-on-year change in total rental listings, Qld SA4 regions, Jan 23

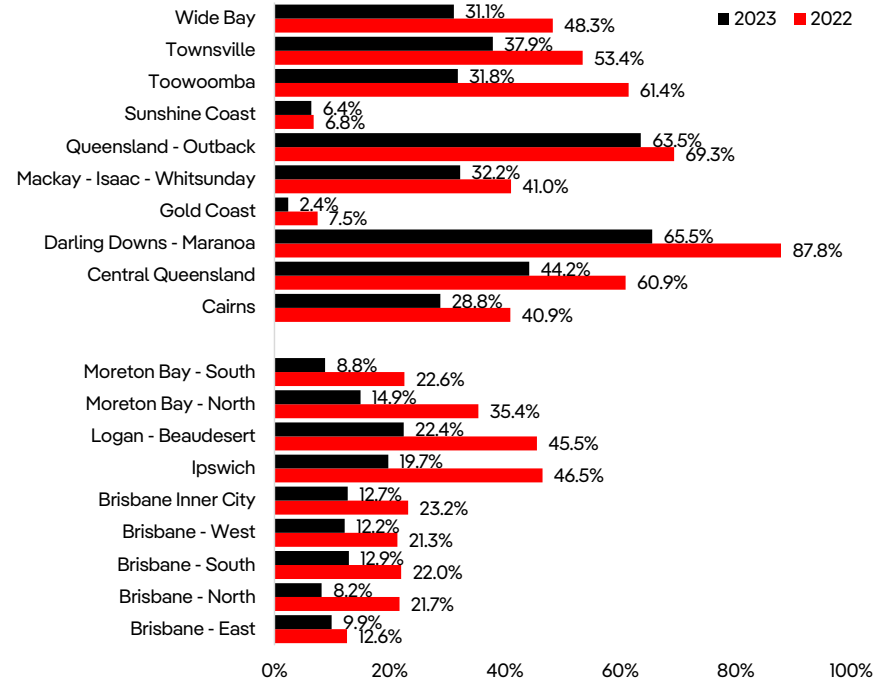


It is becoming increasingly difficult to find rentals for less than \$400/week throughout Qld

Share of total rental listings under \$400/week, Qld

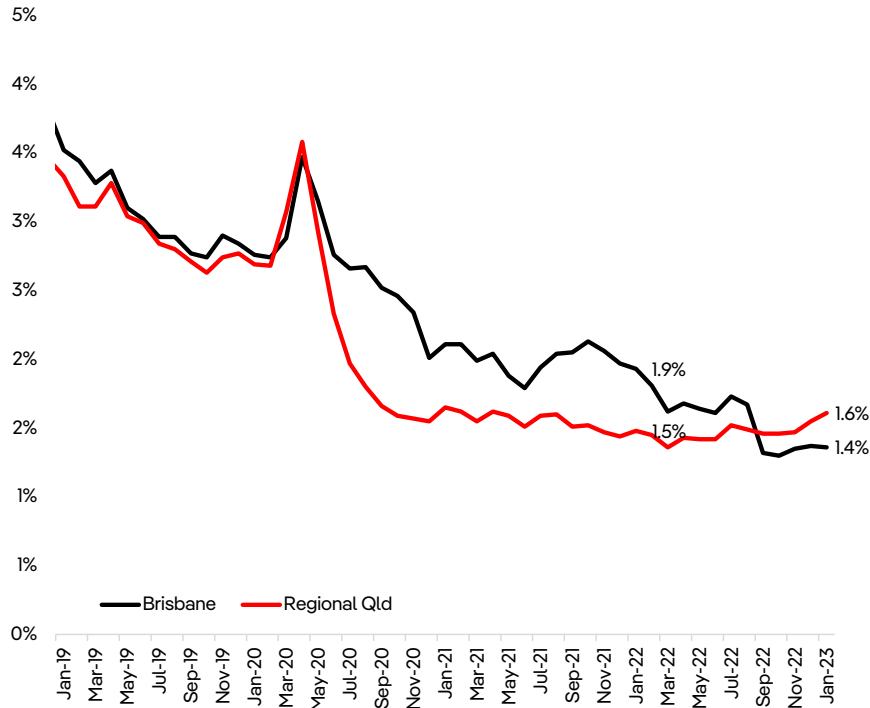


Share of total rental listings under \$400/week, Qld SA4 regions
Jan 22 vs Jan 23

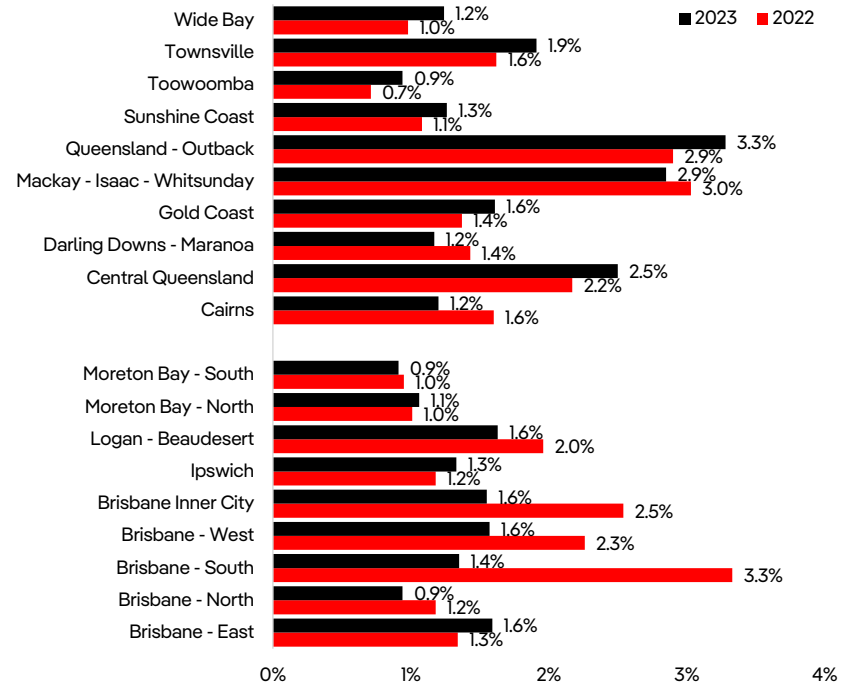


Rental vacancy rates have fallen over the year in Brisbane but drifted marginally higher regionally

Rental vacancy rates, Qld

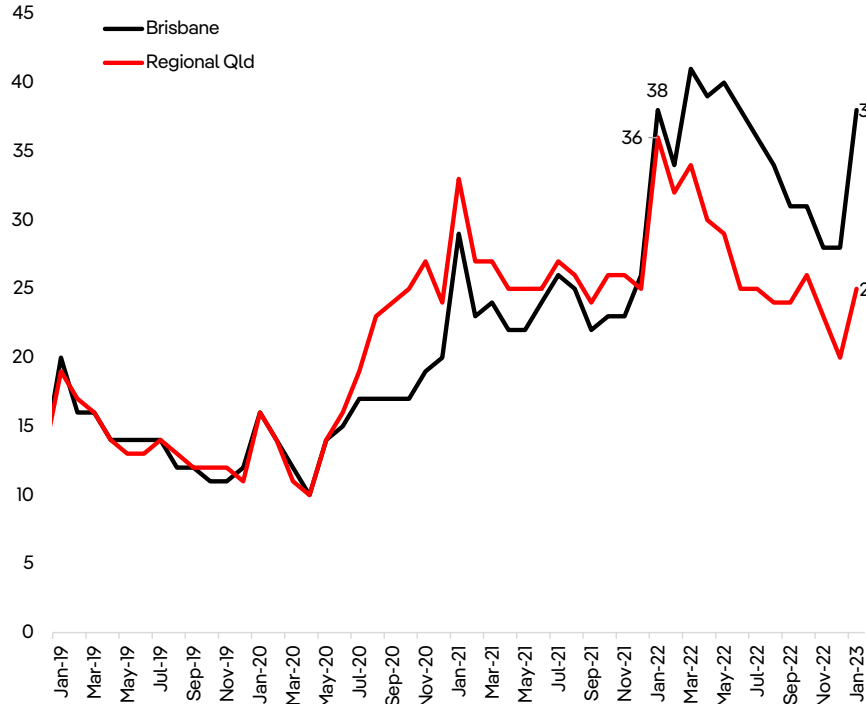


Rental vacancy rates, Qld SA4 regions, Jan 22 vs Jan 23

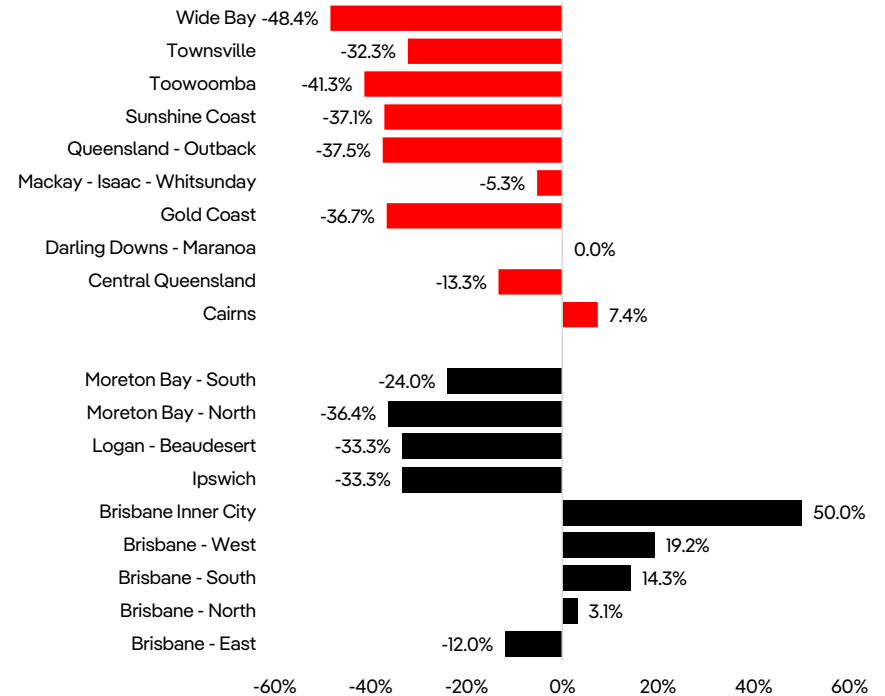


Enquiry per listing in Brisbane were unchanged yoy in Jan 23 and in regional Qld they were -30.6% yoy

Average enquiry per listings, properties for rent, Qld

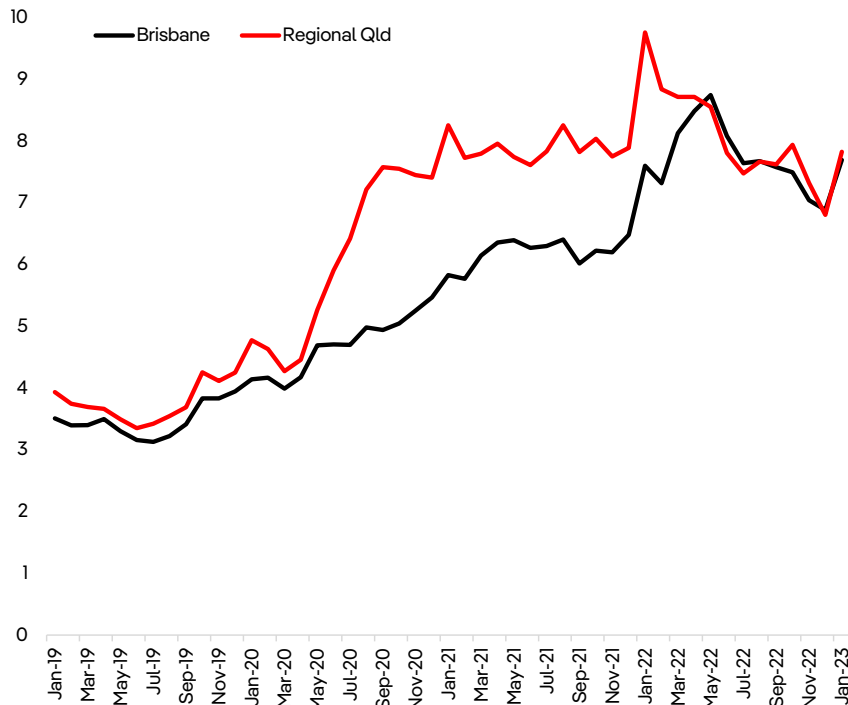


Year-on-year change in enquiry per listings, Qld SA4 regions, Jan 23

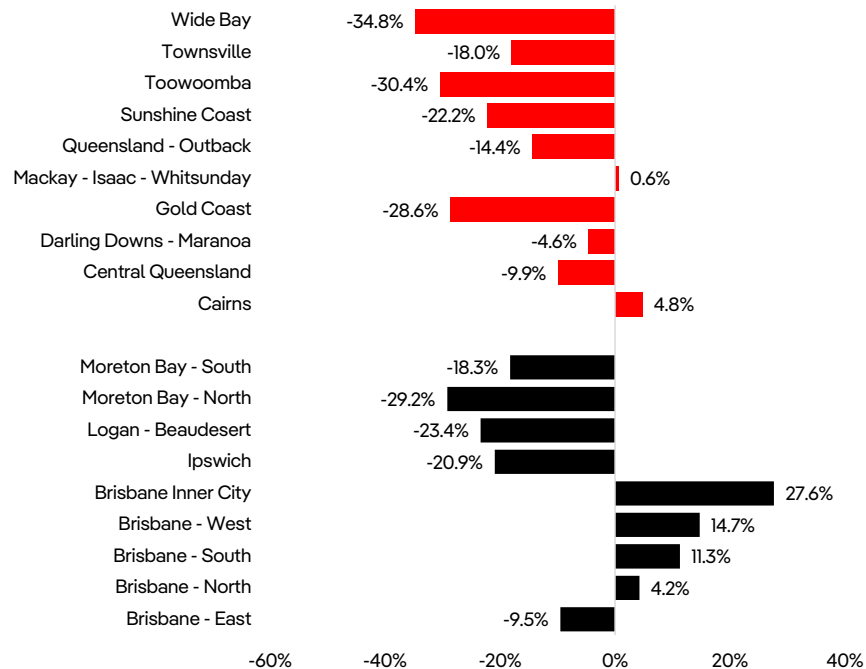


Potential renters per listing in Brisbane were +1.2% yoy and in regional Qld they were -19.8% yoy

Potential renters per listing, Brisbane vs regional Qld

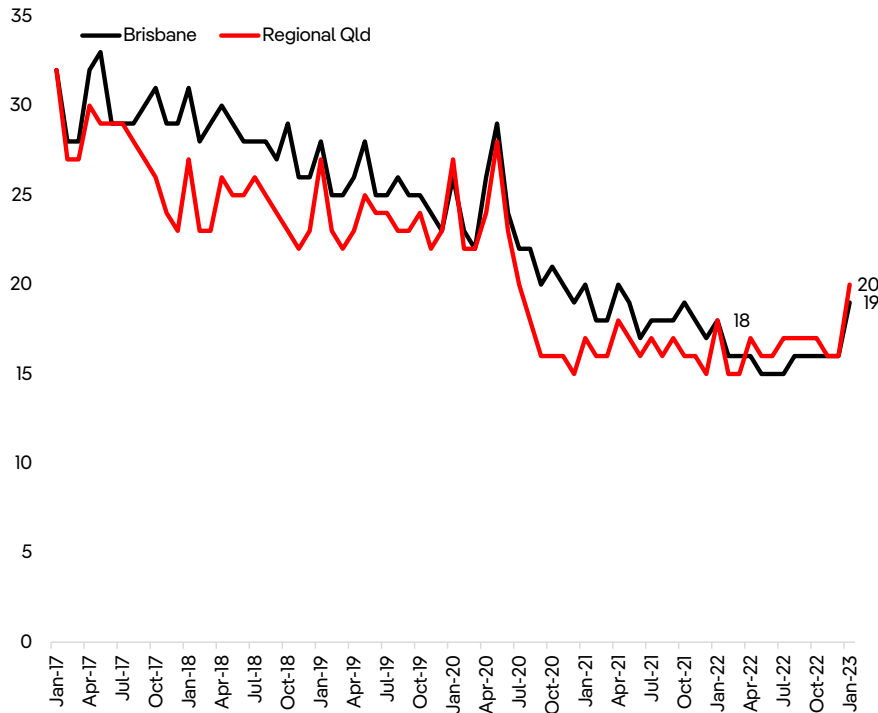


Year-on-year change, potential renters per listing, Qld SA4 regions, Jan 23

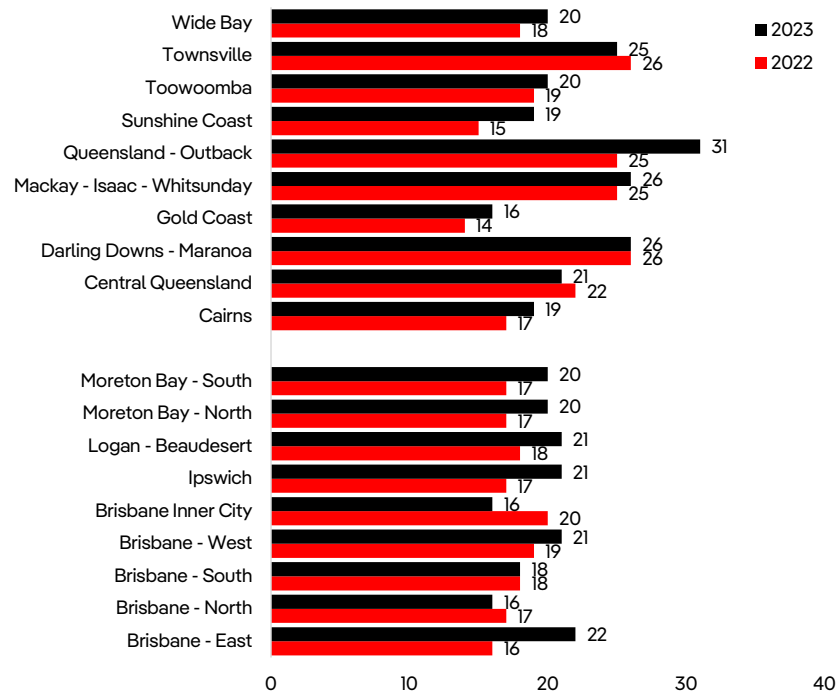


Properties continue to lease very quickly throughout most of Qld

Monthly median days on site for properties for rent, Qld



Median days on site for properties that leased, Qld SA4 regions, Jan 22 vs Jan 23



Thank you!

