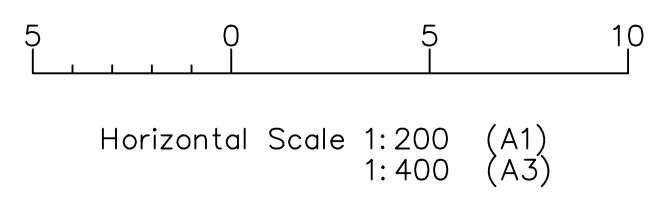
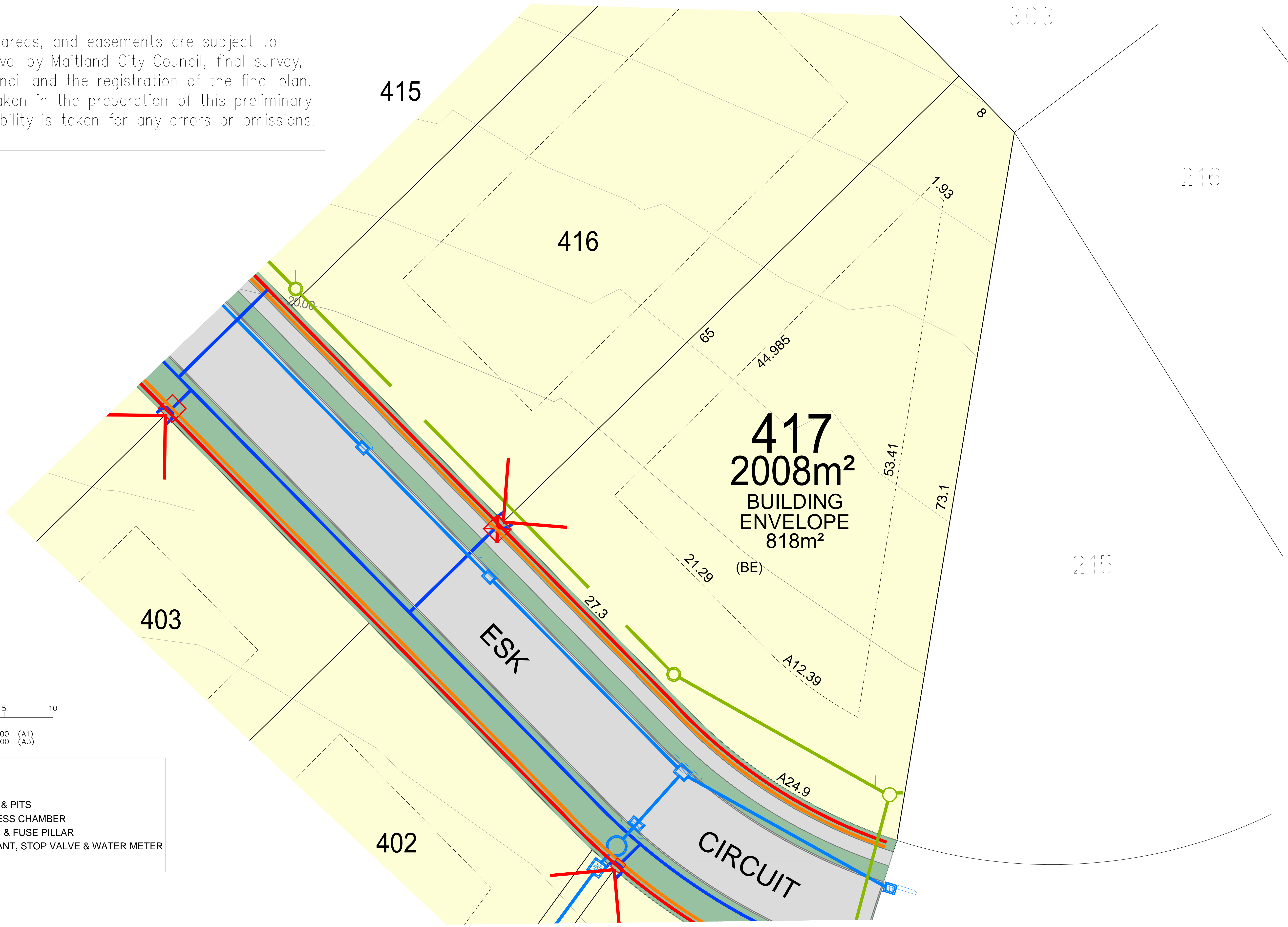


All dimensions, areas, and easements are subject to Development Approval by Maitland City Council, final survey, endorsement by council and the registration of the final plan. All care has been taken in the preparation of this preliminary plan but no responsibility is taken for any errors or omissions.



- LEGEND**
- APPROXIMATE LOCATIONS
- SW STORMWATER PIPE & PITS
 - S SEWER PIPE & ACCESS CHAMBER
 - E-E ELECTRICITY CABLE & FUSE PILLAR
 - H-W-W WATER PIPE, HYDRANT, STOP VALVE & WATER METER
 - N-C NBN CABLE & PIT

(BE) BUILDING ENVELOPE



SURVEYORS TOWN PLANNERS
CIVIL ENGINEERS PROJECT MANAGERS

98 LAWES STREET
EAST MAITLAND 2323

Ph (02) 4934 3026
Fax (02) 4934 3027

Pulver Cooper & Blackley Pty.Ltd.
Other than as permitted by the Copyright Act 1968, reproduction, publication or use without prior written permission of Pulver, Cooper & Blackley Pty.Ltd. is prohibited.

DISCLOSURE PLAN
LOT 417 ESK CIRCUIT
MAITLAND VALE

CLIENT: GRANGE ESTATES (NSW) PTY LTD			
INSTRUCTION NUMBER:	16/202	SURVEYED:	N/A
COMPUTER FILE:	ID 176229 (PDF)	DESIGNED:	N/A
SCALE:	1: 400 (A3)	DRAWN:	SY
CONTOUR INTERVAL:	1m	SHEET NUMBER:	17/17