

FOREVER RETREAT

Forever part of your journey.

HOUSE & LAND

T A H A 2 1 8



4 2 2

Total (sqm)	23.44
Total (m ²)	217.8
Width (m)	11.79
Length (m)	23.2

GET INTO YOUR DREAM HOME

Lot 315 Musgrove Ave
Maitland Vale Acreages
Maitland Vale

(Land: 2791 m²)

\$518,718*

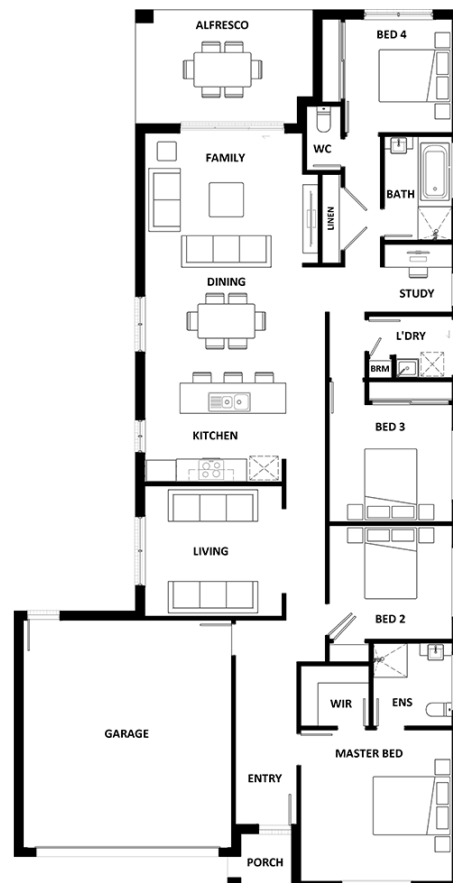
Features & Inclusions

- Carpet and tiles throughout
- Colorbond Roof
- Ducted Cooling
- Expansive alfresco area
- Generous site cost allowance

For more details, call

Lana Coleman

0447 099 292



**Hotondo
Homes**

*Dimensions, photographs, floor plans and façade images are approximate and for illustrative purposes only. They are not drawn to scale. The dimensions provided of "width" and "length" are the actual dimensions of the completed house including alfresco areas (where applicable). It is the home owner's responsibility to ensure that all applicable council regulations and estate requirements are met. Subject to land availability, pricing and site costs unless advertised as a 'fixed price package'. Driveway size based on builder's preferred siting. Check with your local builder for builder's standard range and inclusions. Photographs may include optional features or items that are not supplied by Hotondo Homes. Hotondo Homes reserves the right to change plans, specifications, materials and suppliers without notice. For more information visit your local builder or hotondo.com.au.