



## Arcadia 23

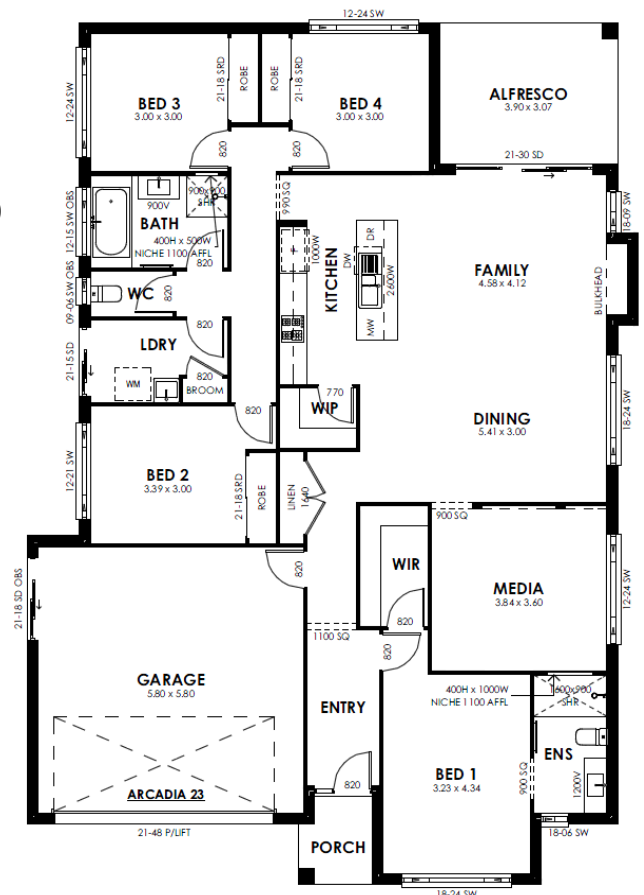
House Size: 221m<sup>2</sup> (23.7sq) Width: 12.9m Depth: 18.8m Minimum Lot Width: 14.9m



# \$288,383

### HOUSE ONLY PACKAGE INCLUSIONS

- ✓ FREE Executive Inclusions – Valued at over \$20,000
- ✓ Fixed price tender guarantee
- ✓ Site costs based on M Class site
- ✓ Termite resistant frame and trusses
- ✓ Basix requirements
- ✓ Façade as shown
- ✓ Carpet and tiles throughout
- ✓ 20mm stone bench top to kitchen
- ✓ Soft close doors and drawers
- ✓ Cold water point for fridge
- ✓ Wall hung vanities
- ✓ Shower niches
- ✓ Flyscreens
- ✓ 3 coat paint system
- ✓ LED downlights
- ✓ 1000mm wall tiles to bathroom & ensuite
- ✓ NBN ready for future activation
- ✓ Concrete alfresco
- ✓ Ducted Air



### FOR MORE INFORMATION

Rex Wydeman | Harvest Estate Display, Harvest Boulevard Chisholm | 02 4936 6115 | [harvest@visionhomes.com.au](mailto:harvest@visionhomes.com.au)  
 Sally Doherty | Homeworld Display, Kingham Circuit Thornton | 02 4006 3921 | [homeworld@visionhomes.com.au](mailto:homeworld@visionhomes.com.au)

Prices shown are based on pricelist dated 15/07/2019. Vision Homes reserves the right to change prices and inclusions without prior notice and without obligation. Undetermined site conditions such as cut and fill, tree removal, bushfire, rock, acoustics and developer covenants are exclude. Images shown are for illustrative purposes only and may not represent the final product. All packages are subject to approval by land developer or council.