



Image may depict upgrades that are not included in the pricing.

**Floor area: 287.92m<sup>2</sup> / 30.95sq | Block size: 1501m<sup>2</sup>**  
**Address: Lot 706 Lomond Street, Louth Park**



## Calypso 31 Package Inclusions

**"ASK US ABOUT OUR CURRENT PROMOTIONS"**

- \* Hamptons Facade
- \* Upgraded Designer Kitchen with Stainless Steel appliances
- \* Westinghouse dual fuel freestanding cooker & canopy rangehood
- \* 'Reconstituted' stone benchtops to Kitchen
- \* LED downlights throughout
- \* Fully Ducted Air Conditioning
- \* Floor coverings throughout.
- \* Flyscreens to all windows and sliding doors.
- \* Wall mounted clothesline
- \* Powder coated metal letterbox
- \* TV antenna
- \* Brick Letterbox
- \* Concrete Allowance to Driveway, Porch & Summer Lounge
- \* Site Cost allowance including Council Approval (subject to Contour Survey)
- \* Allowance included for late registration date

**Brooke Sinclair**

02 4077 3833

brooke.sinclair@perryhomes.com.au

www.hunterregionhouseandland.com.au

**Ben Hancock**

0435 956 546

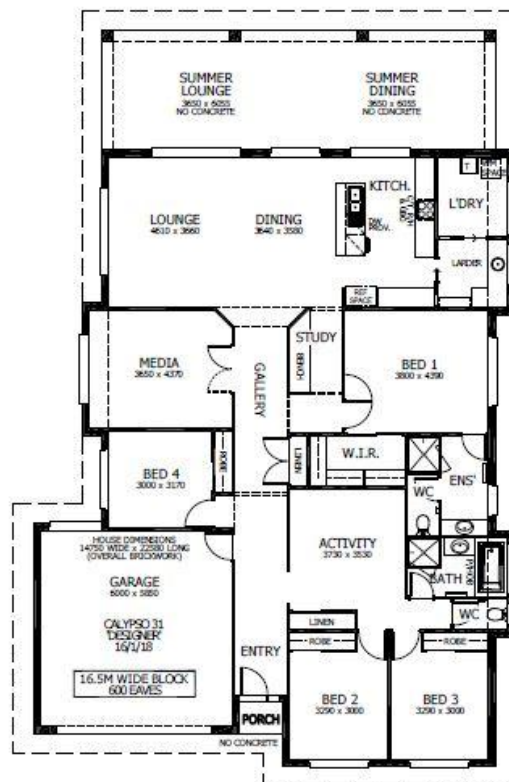
ben.hancock@perryhomes.com.au

www.hunterregionhouseandland.com.au



**HILLVIEW**  
LOUTH PARK

**PETERS**  
REAL ESTATE



**hunter**  
house & land packages

"Disclaimer: Due care has been taken with the siting, design and pricing of the proposed dwelling based upon current information and is correct at time of publication. This however, may change as a result of other influences such as; developer covenants, local, state or federal government requirements etc. Also, undetermined site conditions such as; tree removal, acoustics, bushfire, rock etc. may be excluded unless otherwise specified. Terms and conditions apply to campaigns and special offers. Plans and images are for illustrative purposes only and may depict features such as landscaping, furniture, window furnishings and lighting that are not included in the package price or which are not available from Perry Homes. Land price is correct at time of printing and subject to change without notice. Perry Homes reserve the right to withdraw this package at any time without notice. Perry Homes (Aust) Pty Ltd. QBCC Act Lic. No.718748 NSW Lic No. 110970C."