



Image may depict upgrades that are not included in the pricing.

Floor area: 250.73m<sup>2</sup> / 26.99sq | Block size: 1631m<sup>2</sup>

Address: Lot 714 Lomond Street, Louth Park

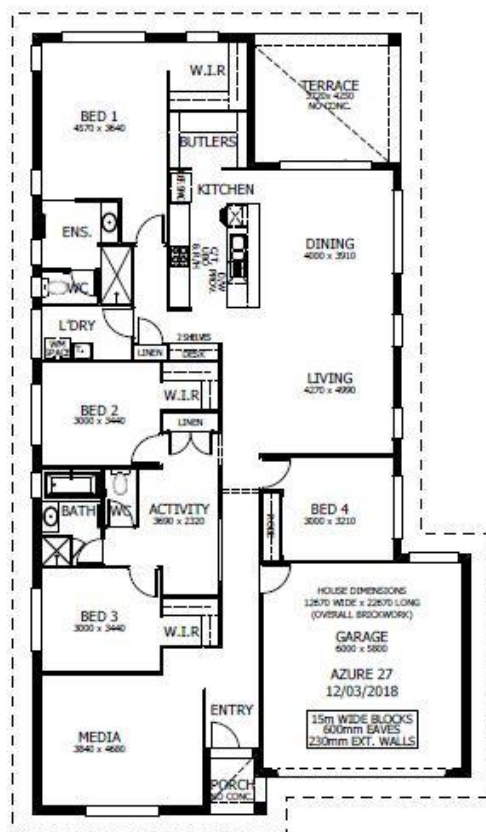


## Azure 27 Package Inclusions

\* The Azure 27 is on display at 22 Breakwell Road, Cameron Park

**"ASK US ABOUT OUR CURRENT PROMOTIONS"**

- \* Hampton's facade
- \* Upgraded Designer Kitchen with Stainless Steel appliances
- \* Westinghouse dual freestanding cooker & canopy range hood
- \* 'Reconstituted' stone benchtops to Kitchen
- \* LED downlights throughout
- \* Fully Ducted Air Conditioning
- \* Floor coverings throughout.
- \* Flyscreens to all windows and sliding doors.
- \* Wall mounted clothesline
- \* Brick letterbox
- \* TV antenna.
- \* Concrete Allowance to Driveway, Porch & Terrace
- \* Site Cost allowance including Council Approval (subject to Contour Survey)
- \* Allowance included for late registration date



**BROOKE SINCLAIR**

02 4077 3833

brooke.sinclair@perryhomes.com.au

www.hunterregionhouseandland.com.au

**BEN HANCOCK**

0435 956 546

ben.hancock@perryhomes.com.au

www.hunterregionhouseandland.com.au

