



Image may depict upgrades that are not included in the pricing.

Floor area: 244m² / 26.23sq | Block Size: 900m²
Address: Lot 523 Charlotte Street, Lochinvar

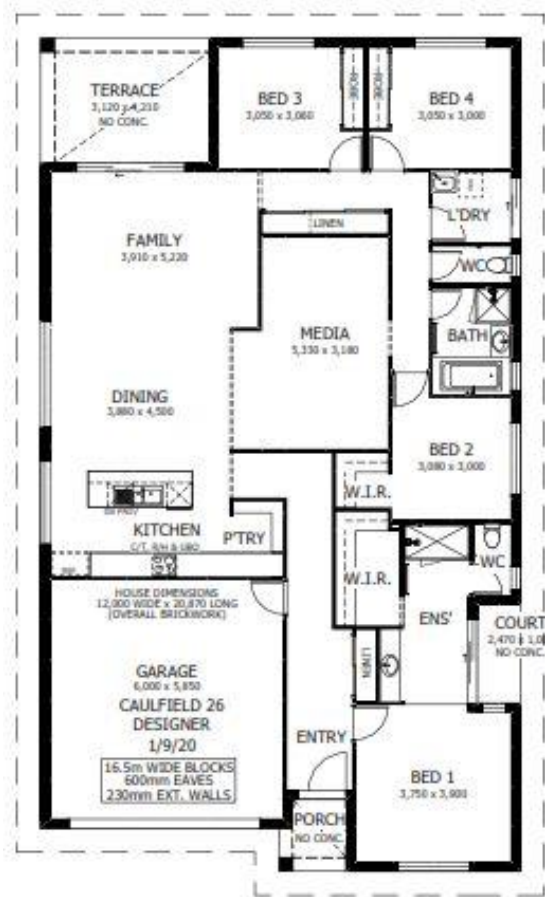


Caulfield 26 Package Inclusions

"ASK US ABOUT OUR CURRENT PROMOTIONS"

- * Classic facade
- * Covered Alfresco
- * Perry Homes 'Standard Inclusions'
- * Upgraded Designer Kitchen with stainless steel appliances
- * Westinghouse dual fuel freestanding cooker & canopy range hood
- * 'Reconstituted' stone benchtops to Kitchen
- * Fully ducted Air Conditioning
- * All internal floor coverings
- * Wall mounted clothesline
- * Brick letterbox
- * TV antenna
- * Flyscreens to all windows and sliding doors
- * Concrete allowance to driveway, porch, court and terrace
- * Allowance for late registration date
- * Site Works and BASIX allowance, including Council Lodgement (subject to Contour Survey)

St Helena
VILLAGE LOCHINVAR



BEN HANCOCK

0435 956 546

ben.hancock@perryhomes.com.au

www.hunterregionhouseandland.com.au

BROOKE SINCLAIR

02 4077 3833

brooke.sinclair@perryhomes.com.au

www.hunterregionhouseandland.com.au

hunter
house & land packages

PETERS
REAL ESTATE

"Disclaimer: Due care has been taken with the siting, design and pricing of the proposed dwelling based upon current information and is correct at time of publication. This however, may change as a result of other influences such as; developer covenants, local, state or federal government requirements etc. Also, undetermined site conditions such as; tree removal, acoustics, bushfire, rock etc. may be excluded unless otherwise specified. Terms and conditions apply to campaigns and special offers. Plans and images are for illustrative purposes only and may depict features such as landscaping, furniture, window furnishings and lighting that are not included in the package price or which are not available from Perry Homes. Land price is correct at time of printing and subject to change without notice. Perry Homes reserve the right to withdraw this package at any time without notice. Perry Homes (Aust) Pty Ltd. QBCC Act Lic. No. 718748 NSW Lic No. 110970C."