



Image may depict upgrades that are not included in the pricing.

Floor area: 276.29m² / 29.74sq | Block size: 945m²

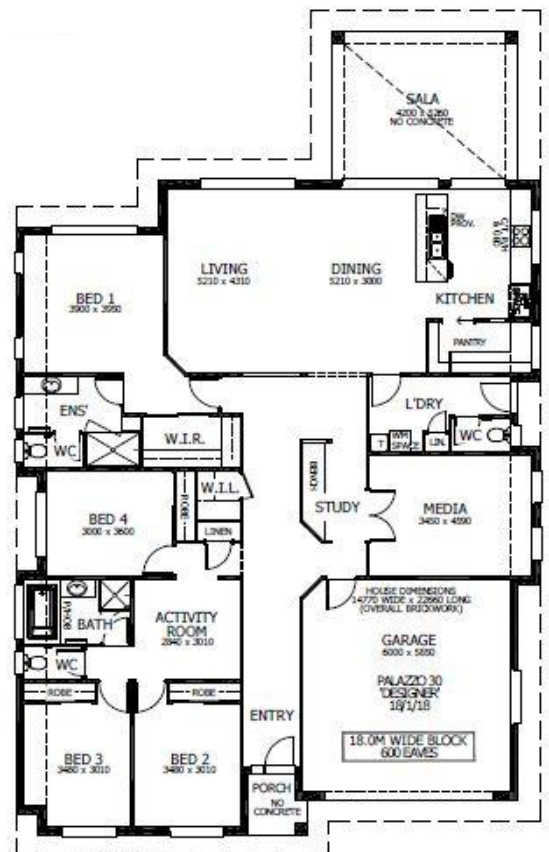
Address: Lot 528 Johannes Street, Lochinvar



Palazzo 30 Package Inclusions

"ASK US ABOUT OUR CURRENT PROMOTIONS"

- * Designer Plus Portico
- * Upgraded Designer Kitchen with Stainless Steel appliances
- * Westinghouse dual fuel freestanding cooker & canopy range hood
- * 'Reconstituted' stone benchtops to Kitchen
- * LED downlights throughout
- * Fully Ducted Air Conditioning
- * Floor coverings throughout
- * Wall mounted clothesline
- * Brick letterbox
- * TV antenna
- * Flyscreens to all windows and sliding doors
- * Concrete Allowance to Driveway, Porch & Sala
- * Site Cost allowance including Council Approval (subject to Contour Survey)
- * Allowance included for late registration date



BEN HANCOCK

0435 956 546

ben.hancock@perryhomes.com.au

www.hunterregionhouseandland.com.au

BROOKE SINCLAIR

02 4077 3833

brooke.sinclair@perryhomes.com.au

www.hunterregionhouseandland.com.au



"Disclaimer: Due care has been taken with the siting, design and pricing of the proposed dwelling based upon current information and is correct at time of publication. This however, may change as a result of other influences such as; developer covenants, local, state or federal government requirements etc. Also, undetermined site conditions such as; tree removal, acoustics, bushfire, rock etc. may be excluded unless otherwise specified. Terms and conditions apply to campaigns and special offers. Plans and images are for illustrative purposes only and may depict features such as landscaping, furniture, window furnishings and lighting that are not included in the package price or which are not available from Perry Homes. Land price is correct at time of printing and subject to change without notice. Perry Homes reserve the right to withdraw this package at any time without notice. Perry Homes (Aust) Pty Ltd. QBCC Act Lic. No.718748 NSW Lic No. 110970C."